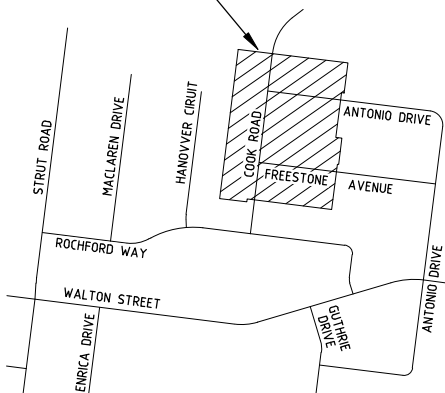




SITE OF WORKS



LOCALITY PLAN
NOT TO SCALE

SHEET INDEX

SHT No.	VER	DESCRIPTION
1	A	LAYOUT PLAN
2	A	TYPICAL CROSS SECTIONS
3	A	PASSIVE STREET IRRIGATION DETAILS
4	A	INTERSECTION DETAILS
5	A	COOK ROAD - SHEET 1
6	A	COOK ROAD - SHEET 2
7	A	FREESTONE AVENUE
8	A	ANTONIO DRIVE
9	A	DRAINAGE LONGITUDINAL SECTIONS - 1
10	A	DRAINAGE LONGITUDINAL SECTIONS - 2
11	A	DRAINAGE PIT SCHEDULE
12	A	SIGNAGE AND LINEMARKING

NOTE: TREE PIT LOCATIONS ARE INDICATIVE ONLY, FINAL LOCATION TO BE COORDINATED WITH FINAL LANDSCAPE CONSTRUCTION DRAWINGS.

SERVICE OFFSETS AND LOCATION TABLE

ROAD NAME	RESERVE WIDTH	WATER		GAS		ELECTRICITY				TELECOMMUNICATIONS		BOK	
		SIDE	OFFSET	SIDE	OFFSET	POLE	OFFSET	U/G CABLE	OFFSET	SIDE	OFFSET	SIDE	SIDE
COOK ROAD	16.00	W	2.60	W	2.10	E	1.00*	E	2.40	E	1.85	4.20 W	4.20 E
FREESTONE AVENUE	16.00	N	2.60	N	2.10	S	1.00*	S	2.50	S	1.85	4.20 N	4.20 S
ANTONIO DRIVE	16.00	N	2.60	N	2.10	S	1.00*	S	2.50	S	1.85	4.20 N	4.20 S

NOTE: * OFFSET FROM BACK OF KERB

SYMBOL LEGEND

Drains	Prop	Exht
Sewer <300	-S-	-S-
Sewer >300	-S-	-S-
Water	-W-	-W-
House Drain	-H-	-H-
Property Inlet	-P-	-P-
Street Sign	-S-	-S-
PSW	-P-	-P-
Retaining Wall	-R-	-R-
Conduits 50mm	-C-	-C-
Conduits 100mm	-C-	-C-
Ex Gas/Elect/Tel	-G-	-G-
Proposed Street Trees	-T-	-T-
Refer sheet 3		
Temporary Bench Mark (TBM)		
Ex/Natural/FS Level	BL28.57	
FS @ Building Line	BL28.57	
Top/Toe of Batter	TOP28.57 / TOE28.57	
Top Ret. Wall Level	TW28.57	
Fill Prop/Ex (0.2m-0.5m depth)		
Fill Prop/Ex (>0.5m depth)		
Cut Prop/Ex (>0.2m depth)		
Threshold Treatment		

VER	DATE	REMARKS
A	22.04.20	ISSUED FOR CONSTRUCTION



breese pitt dixon pty. ltd.
land surveyors
civil engineers

MELWAY REF.	342 J5
SURVEY	BPD
DESIGN	JGB
DRAWN	IMW
CHECKED	-

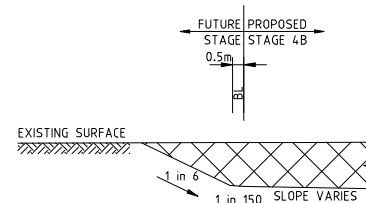
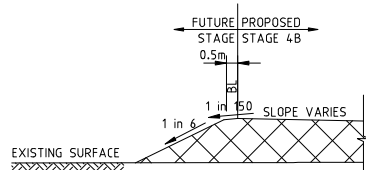
ORCHARD GREEN ESTATE
STAGE 4B
LAYOUT PLAN

1/19 cato street
hawthorn east, 3123
telephone 8823 2300
fax no. 8823 2310

MUNICIPALITY	MELTON
REFERENCE	7776 - E/4B
SHEET	1 OF 12
A	

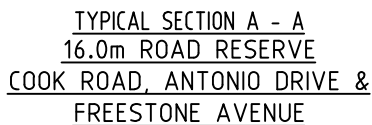


PLAN
SCALE 1:500

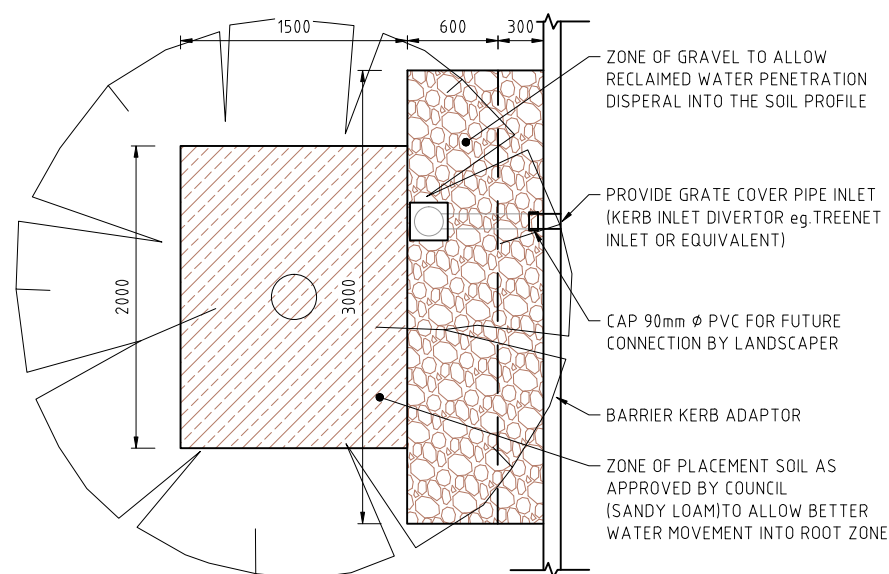



1. CONSTRUCTION PLANS MUST BE ACCOMPANIED BY THE APPROVED SPECIFICATION. NO WORK IS TO COMMENCE WITHOUT EVIDENCE OF POSSESSION OF EACH.
2. ALL WORKS TO BE CARRIED OUT TO STANDARD DRAWINGS AND SPECIFICATION AS APPROVED BY SHIRE OF MELTON AND TO THE SATISFACTION OF THE ENGINEER AND THE MUNICIPAL ENGINEER. IN CASE OF A DISPUTE THE SPECIFICATION MUST TAKE PRECEDENCE.
3. COUNCIL TO BE NOTIFIED SEVEN (7) CLEAR DAYS PRIOR TO COMMENCEMENT OF WORKS.
4. PROPERTY INLETS ARE TO BE PLACED 1.0m FROM THE LOW CORNER OF LOT UNLESS OTHERWISE SHOWN. MINIMUM COVER TO BE 500mm. REFER GAA STD DWGS EDMC701, EDMC702, EDMC703 & EDMC704.
5. LOTS DENOTED THUS 'H' ARE TO BE PROVIDED WITH A 100mm DIA. HOUSE DRAIN PLACED 6.5m FROM LOW CORNER OF LOT UNLESS OTHERWISE SHOWN. REFER GAA STD DWGS EDMC701, EDMC702, EDMC703 & EDMC704.
6. AGRICULTURAL PIPE DRAINS, AS PER GAA STD DWG EDMC202, TO BE PLACED BEHIND ALL KERB AND CHANNEL AND BUFFER PITCHERS AND WHERE DIRECTED BY THE ENGINEER.
7. DRAINAGE AND PITS TO BE SET OUT FROM OFFSETS SHOWN RATHER THAN FROM PIPE CHAINAGES. CENTRELINE OF PITS AT TP'S TO BE OFFSET 1.00m.
8. DRAINAGE PIPES UP TO AND INCLUDING 750mm DIA TO BE CLASS 2 R.C. (RRJ). PIPES 825mm AND GREATER TO BE CLASS 2 R.C. (IJ) UNLESS OTHERWISE SHOWN. ALL ROAD CROSSINGS AND PIPES LAID ON A CURVED ALIGNMENT TO BE RUBBER RING JOINTED.
9. WHERE DRAINAGE PIPES ARE LOCATED WITHIN NATURAL STRIPS, THE TRENCH SHALL BE BACKFILLED WITH COMPACTED CLASS 3 F.C.R. UP TO A LEVEL WHERE THE 45deg. INFLUENCE LINE FROM THE B.O.K. INTERSECTS WITH THE NEAREST TRENCH SIDE. PROVIDE CRUSHED ROCK BACKFILL WHERE DRAINAGE CROSSES BELOW FOOTPATHS.
10. PIPE TRENCHES WITHIN THE ROAD RESERVE MUST BE BACKFILLED WITH 20mm CLASS 3 CRUSHED ROCK TO A RELATIVE COMPACTION OF 97% OF THE MAXIMUM FOUND IN THE STANDARD COMPACTION TEST FOR THE FOLLOWING:
 - i) BENEATH THE ROAD OR DRIVEWAY PAVEMENT TO THE UNDERSIDE OF THE PAVEMENT.
 - ii) ADJACENT TO KERBING OR CONCRETE WORKS TO A LEVEL THAT IS NOT AFFECTED BY A 45 DEGREE ANGLE OF REPOSE FROM THE NEAR LOWER EDGE. (TRENCHES TO BE BACKFILLED IN LAYERS NOT EXCEEDING 200mm LOOSE).
11. PRIOR TO COMMENCEMENT OF WORKS ON SITE, THE CONTRACTOR MUST ENSURE THAT ALL MATTERS RELATING TO THE OCCUPATIONAL HEALTH AND SAFETY ACT 2004, INCLUDING ALL RELEVANT REGULATIONS, HAVE BEEN ADDRESSED. IN PARTICULAR, THE REQUIRED NOTIFICATIONS MUST BE CONVEYED TO THE VICTORIAN WORKCOVER AUTHORITY - HEALTH & SAFETY DIVISION WITH RESPECT TO TRENCHING OPERATIONS. DETAILS OF THE CONTRACTORS OCCUPATIONAL HEALTH & SAFETY PROCEDURES MUST BE LODGED WITH THE SUPERINTENDENT PRIOR TO COMMENCEMENT OF WORKS.
12. BATTERS SHALL BE 1 IN 6 FOR FILL AND 1 IN 6 FOR CUT UNLESS OTHERWISE SHOWN.
13. ON COMPLETION THE CONTRACTOR IS RESPONSIBLE FOR THE REMOVAL OF ALL RUBBISH AND SPOIL FROM SITE.
14. LOTS TO BE GRADED AND LEFT CLEAN TO THE SATISFACTION OF THE ENGINEER, ALL LOTS TO BE 1 IN 150 MINIMUM SLOPE.
15. ALL RESERVE AREAS ARE TO BE SMOOTHED, GRADED, TOP SOILED WHERE REQUIRED WITH A 100mm COMPACTED LAYER OF TOPSOIL AND SEEDED USING AN APPROVED SEED MIX AND METHOD OF SOWING, SUCH THAT THE SURFACE IS SELF-DRAINING, STONE FREE AND ABLE TO BE MAINTAINED BY CONVENTIONAL MOWING EQUIPMENT.
16. FILL AREAS ARE TO BE STRIPPED OF TOPSOIL, FILLED AND TOPSOIL REPLACED TO OBTAIN FINAL FILL LEVELS AS SHOWN ON THE PLANS. FILLING TO BE CLEAN CLAY COMPACTED TO A DRY DENSITY NOT LESS THAN 95% OF THE MAXIMUM DRY DENSITY VALUE DETERMINED BY THE STANDARD COMPACTION TEST IN ACCORDANCE WITH AUSTRALIAN STANDARD AS1289.5.2.1-1993. TESTING TO COMPLY WITH AS3798-1996 APPENDIX B, LEVEL 1.
17. THE CONTRACTOR IS RESPONSIBLE FOR ENSURING THAT ALL IMPORTED FILL MATERIAL, INCLUDING TOPSOIL, SATISFIES THE DESCRIPTION FOR CLEAN FILL MATERIAL IN EPA BULLETIN PUBLICATION No. 4.48 (SEPT '95) AND SUBSEQUENT REVISIONS. THE CONTRACTOR SHALL PROVIDE VERIFICATION INCLUDING TEST CERTIFICATES TO THE SUPERVISING ENGINEER.
18. EARTH FILL IS TO BE COMPACTED TO A RELATIVE COMPACTION COMPARED TO A STANDARD COMPACTION TEST AS SPECIFIED BY VICROADS CORPORATION OF:
 - 100% FOR ALL FILL MATERIAL AND MATERIAL UNDER FILL THAT IS LESS THAN 450mm FROM THE SURFACE.
 - 95% FOR ALL FILL NOT COVERED ABOVE.
19. NATURE STRIP AND AREAS OF CUT ARE TO BE TOP SOILED AND GRASSED TO THE SATISFACTION OF THE ENGINEER. MINIMUM DEPTH TO BE 100mm.
20. ALL NATIVE TREES AND SHRUBS TO BE RETAINED UNLESS ROAD CONSTRUCTION NECESSITATES THEIR REMOVAL OR REMOVAL IS DIRECTED BY THE ENGINEER. NO EXCAVATION WITHIN 5m OF ANY EXISTING NATIVE TREE WITHOUT APPROVAL OF THE ENGINEER.
21. WHERE WORKS ARE IN THE VICINITY OF EXISTING SERVICES THESE SERVICES ARE TO BE LOCATED AND THE VARIOUS AUTHORITIES NOTIFIED, BY THE CONTRACTOR, PRIOR TO THE COMMENCEMENT OF WORKS.
22. SERVICE CONDUITS ARE TO BE PROVIDED AT 90deg TO KERB AND CHANNEL UNLESS OTHERWISE SHOWN AND THE LOCATION IS TO BE MARKED ON THE FACE OF KERB. ALL SERVICE CONDUITS TO BE MINIMUM STANDARD OF CLASS 6, WITH A MINIMUM COVER OF 75mm ABOVE TOP OF CONDUIT TO SUB GRADE LEVEL, AND A SIZE SUITABLE TO SERVICE BUT NOT LESS THAN 50mm.
23. WATER AND GAS CONDUITS TO BE CONSTRUCTED ACROSS NATURE STRIPS AFTER ELECTRICAL CABLE WORK IS COMPLETED.
24. THE WATER CONDUIT OFFSET FROM THE LOT BOUNDARY IS GIVEN ON THE WATER RETICULATION PLAN. THE CONTRACTOR MUST CONSTRUCT CONDUITS TO ACCORD WITH THE GIVEN OFFSET AND ENSURE THAT THE CONCRETE MARKS THE KERB AND FOOTPATH EXACTLY ABOVE THE CONDUIT.
25. TELSTRA/BNB Co, TO BE NOTIFIED SEVEN (7) DAYS PRIOR TO CONCRETE WORKS BEING PLACED.
26. VEHICLE CROSSINGS TO BE OFFSET 0.75m FROM SIDE BOUNDARIES AND EASEMENTS UNLESS OTHERWISE SHOWN AND A MINIMUM OF 0.75m CLEAR OF PITS. VEHICULAR CROSSINGS TO BE CONSTRUCTED IN ACCORDANCE WITH MELTON CITY COUNCIL STD DWGS MCC501 & MCC503.
27. ALL RESIDENTIAL FOOTPATHS SHALL BE 1.5m WIDE (MIN.) AND SHARED PEDESTRIAN/CYCLE PATHS SHALL BE 3m (MIN.). CONCRETE PATHS ARE TO BE 125mm THICK REINFORCED WITH SL72 PLACED CENTRALLY AND UNDERLAIN BY 50mm OF CLASS 3 CR. REFER GAA STD DWG EDMC401.
28. PRAM CROSSINGS ARE TO BE CONSTRUCTED WHERE FOOTPATHS CONNECT TO THE BACK OF KERB & CHANNEL. REFER MELTON CITY COUNCIL STD DWG MCC403.
29. STREET SIGNS ARE TO BE CONSTRUCTED IN ACCORDANCE WITH COUNCIL STANDARDS.
30. THE CONTRACTOR SHALL TO THE SATISFACTION OF THE ENGINEER AND THE MUNICIPAL ENGINEER, PROVIDE AND MAINTAIN INCLUSIVE OF STREET SIGNS, ALL NECESSARY REGULATORY SIGNS, WARNING SIGNS, LIGHTING, LINE MARKING AND BARRICADING TO COMPLY WITH THE REQUIREMENTS OF VICROADS SIGNING CODE OF PRACTICE.
31. THE CONTRACTOR IS TO SUPPLY AND ERECT ALL RELEVANT STREET SIGNAGE AND LINE MARKING AS PART OF THE CONTRACT IN ACCORDANCE WITH VICROADS SPECIFICATION SECTIONS 710 & 722 AND AS1742.1, 2 & 3.
32. ALL ROADS TO BE CONSTRUCTED WITH SM2 AND B2 KERB & CHANNEL. REFER GAA STD DWG EDMC301 & EDMC302.
33. THE CONTRACTOR IS RESPONSIBLE FOR OBTAINING A ROAD OPENING PERMIT FOR WORKS IN PREVIOUSLY CONSTRUCTED ROADWAYS.

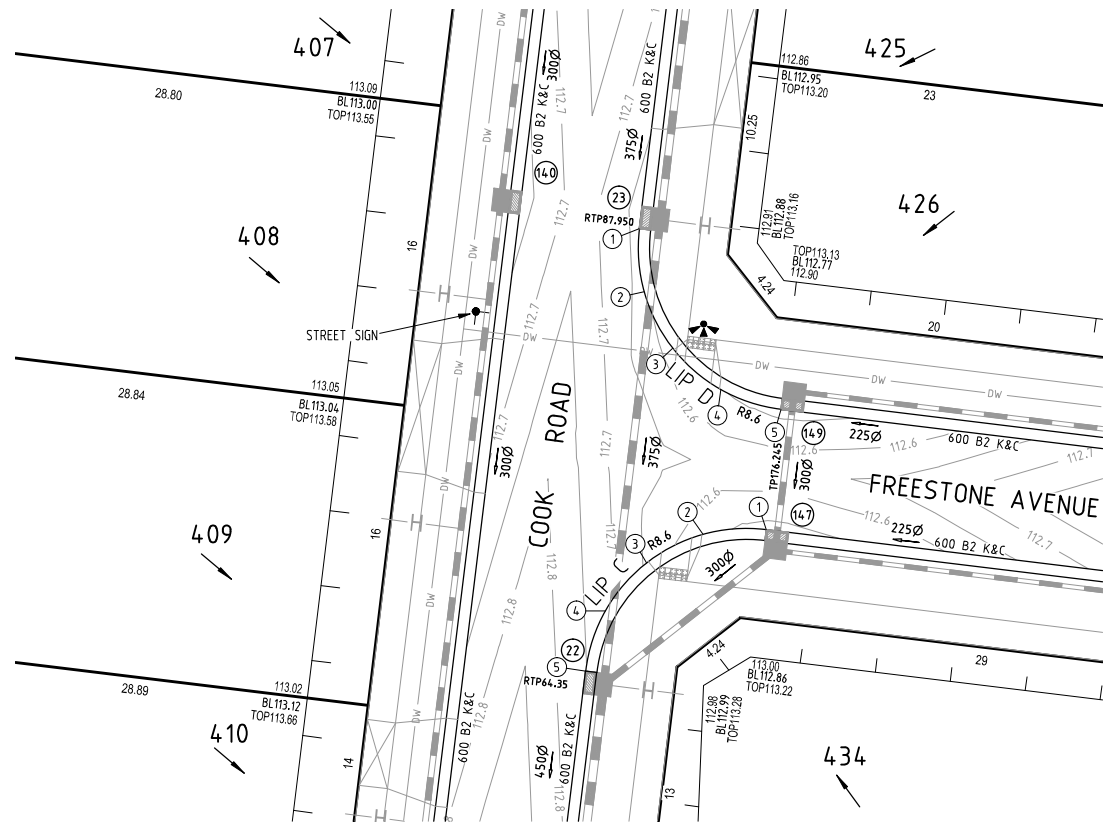
34. IF BLASTING IS REQUIRED THE CONTRACTOR IS RESPONSIBLE FOR OBTAINING A PERMIT TO BLAST AND MAINTAINING SAFETY REGULATIONS ON SITE IN COMPLIANCE WITH THE EXPLOSIVES ACT 1960. THE PERSON WHO IS USING THE EXPLOSIVES ON THE SITE IS TO BE A HOLDER OF A CURRENT PERMIT TO USE EXPLOSIVES ISSUED UNDER THE EXPLOSIVES ACT 1960.
35. THE RELATIVE COMPACTION OF CRUSHED ROCK SHALL BE COMPLETED AT THE OPTIMUM MOISTURE CONTENT TO A DRY DENSITY (BASED ON THE PERCENTAGE OF THE MAXIMUM DRY DENSITY OBTAINED IN THE MODIFIED COMPACTION TEST) AS BELOW.
 - FOR DEPTH 0-100mm BELOW TOP OF BASE: RELATIVE COMPACTION = 100%
 - FOR DEPTH 100-300mm BELOW TOP OF BASE: RELATIVE COMPACTION = 98%
 - FOR DEPTH OVER 300mm BELOW TOP OF BASE: RELATIVE COMPACTION = 97%
36. THE SUBGRADE BELOW ALL PAVEMENTS SHALL BE COMPACTED TO A DRY DENSITY OF NOT LESS THAN 100% OF THE MAXIMUM DRY DENSITY OBTAINED IN THE STANDARD COMPACTION TEST IN AREAS OF CUT TO A DEPTH OF 150mm AND IN AREAS OF FILL TO A DEPTH OF 450mm.
37. CONCRETE TO HAVE A 28 DAY STRENGTH OF 25 Mpa.
38. ALL SPLAYS ARE 3.00m X 3.00m UNLESS OTHERWISE SHOWN.
39. ALL LEVELS ARE TO THE AUSTRALIAN HEIGHT DATUM (A.H.D.).
40. EXISTING DAM OR WATERCOURSES TO BE EXCAVATED TO A FIRM BASE AND BACKFILLED AS SPECIFIED. DEVELOPER'S CONSULTANT TO BE NOTIFIED WHEN THE DAM OR WATERCOURSES ARE EXCAVATED TO A FIRM BASE. NO FILLING IS TO BE PLACED PRIOR TO DAMS BEING INSPECTED AND LEVELS TAKEN. BACKFILLING IS TO BE CARRIED OUT TO THE SATISFACTION OF THE COUNCIL SUPERVISING ENGINEER.
41. THE CONTRACTOR MUST COMPLETE A LEVEL CHECK BETWEEN ALL TBM'S TO VERIFY LEVEL VALUES BEFORE COMMENCEMENT OF WORKS. ALL TBM'S AND CONTROL POINTS ARE TO BE MAINTAINED AND PROTECTED AT ALL TIMES DURING CONSTRUCTION. SHOULD ANY MARKS BE DISTURBED, THE CONTRACTOR WILL IMMEDIATELY NOTIFY THE DEVELOPER'S CONSULTANT TO ARRANGE RE-INSTALLATION AT THE CONTRACTORS EXPENSE.
42. PRIOR TO COMMENCEMENT OF WORKS, THE CONTRACTOR MUST SUBMIT A SMP TO THE DEVELOPER'S CONSULTANT FOR APPROVAL. THE CONTRACTOR MUST COMPLY WITH THE RECOMMENDATIONS OF THE ENVIRONMENT PROTECTION AUTHORITY PUBLICATION No.275 "CONSTRUCTION TECHNIQUES FOR SEDIMENT POLLUTION CONTROL". APPROPRIATE SILTATION CONTROL IS TO BE MAINTAINED THROUGHOUT THE CONSTRUCTION AND MAINTENANCE PERIOD OF THE WORKS.
43. PROVIDE 1.8m HIGH PALING FENCE ALONG ANY COMMON BOUNDARY BETWEEN A LOT AND MUNICIPAL RESERVE. PALINGS TO BE ON THE RESERVE SIDE AND STAINED IN A DARK GREEN COLOUR ON THE SIDE FACING THE RESERVE TO THE SATISFACTION OF COUNCIL.



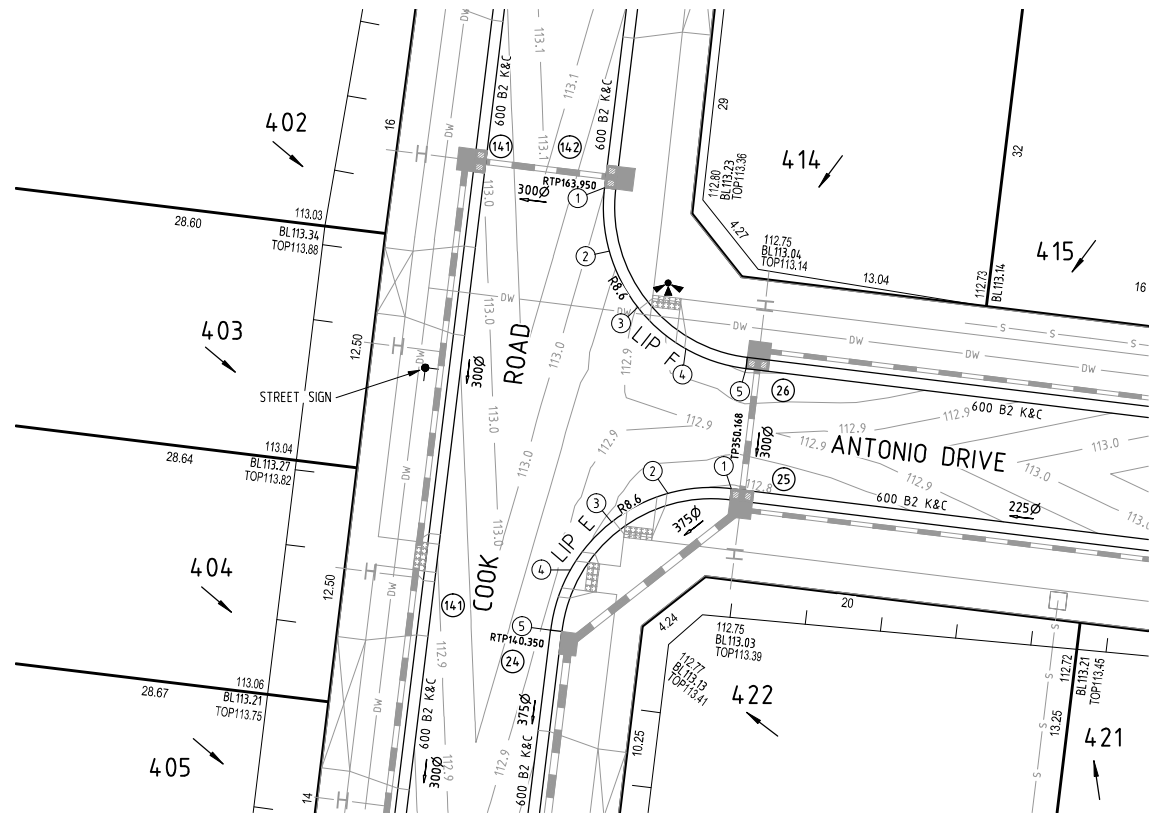
SYMBOL LEGEND		<div><div><div>Prop</div><div>Exit</div></div><div><div>Drains</div><div>Sewer <300</div><div>Sewer >300</div><div>Water</div><div>House Drain</div><div>Property Inlet</div><div>Street Sign</div><div>PSM</div><div>Retaining Wall</div><div>Conduits 50mm</div><div>Conduits 100mm</div><div>Ex Gas/Elect/Tel</div></div><div><div><div><div><div></div><div></div></div><div><div></div><div></div></div><div><div></div><div></div></div><div><div></div><div></div></div><div><div></div><div></div></div><div><div></div><div></div></div><div><div></div><div></div></div><div><div></div><div></div></div><div><div></div><div></div></div><div><div></div><div></div></div><div><div></div><div></div></div><div><div></div><div></div></div><div><div></div><div></div></div><div><div></div><div></div></div><div><div></div><div></div></div><div><div></div><div></div></div><div><div></div><div></div></div><div><div></div><div></div></div><div><div></div><div></div></div><div><div></div><div></div></div><div><div></div><div></div></div><div><div></div><div></div></div><div><div></div><div></div></div><div><div></div><div></div></div><div><div></div><div></div></div><div><div></div><div></div></div><div><div></div><div></div></div><div><div></div><div></div></div><div><div></div><div></div></div><div><div></div><div></div></div><div><div></div><div></div></div><div><div></div><div></div></div><div><div></div><div></div></div><div><div></div><div></div></div><div><div></div><div></div></div><div><div></div><div></div></div><div><div></div><div></div></div><div><div></div><div></div></div><div><div></div><div></div></div><div><div></div><div></div></div><div><div></div><div></div></div><div><div></div><div></div></div><div><div></div><div></div></div><div><div></div><div></div></div><div><div></div><div></div></div><div><div></div><div></div></div><div><div></div><div></div></div><div><div></div><div></div></div><div><div></div><div></div></div><div><div></div><div></div></div><div><div></div><div></div></div><div><div></div><div></div></div><div><div></div><div></div></div><div><div></div><div></div></div><div><div></div><div></div></div><div><div></div><div></div></div><div><div></div><div></div></div><div><div></div><div></div></div><div><div></div><div></div></div><div><div></div><div></div></div><div><div></div><div></div></div><div><div></div><div></div></div><div><div></div><div></div></div><div><div></div><div></div></div><div><div></div><div></div></div><div><div></div><div></div></div><div><div></div><div></div></div><div><div></div><div></div></div><div><div></div><div></div></div><div><div></div><div></div></div><div><div></div><div></div></div><div><div></div><div></div></div><div><div></div><div></div></div><div><div></div><div></div></div><div><div></div><div></div></div><div><div></div><div></div></div><div><div></div><div></div></div><div><div></div><div></div></div><div><div></div><div></div></div><div><div></div><div></div></div><div><div></div><div></div></div><div><div></div><div></div></div><div><div></div><div></div></div><div><div></div><div></div></div><div><div></div><div></div></div><div><div></div><div></div></div><div><div></div><div></div></div><div><div></div><div></div></div><div><div></div><div></div></div><div><div></div><div></div></div><div><div></div><div></div></div><div><div></div><div></div></div><div><div></div><div></div></div><div><div></div><div></div></div><div><div></div><div></div></div><div><div></div><div></div></div><div><div></div><div></div></div><div><div></div><div></div></div><div><div></div><div></div></div><div><div></div><div></div></div><div><div></div><div></div></div><div><div></div><div></div></div><div><div></div><div></div></div><div><div></div><div></div></div><div><div></div><div></div></div><div><div></div><div></div></div><div><div></div><div></div></div><div><div></div><div></div></div><div><div></div><div></div></div><div><div></div><div></div></div><div><div></div><div></div></div><div><div></div><div></div></div><div><div></div><div></div></div><div><div></div><div></div></div><div><div></div><div></div></div><div><div></div><div></div></div><div><div></div><div></div></div><div><div></div><div></div></div><div><div></div><div></div></div><div><div></div><div></div></div><div><div></div><div></div></div><div><div></div><div></div></div><div><div></div><div></div></div><div><div></div><div></div></div><div><div></div><div></div></div><div><div></div><div></div></div><div><div></div><div></div></div><div><div></div><div></div></div><div><div></div><div></div></div><div><div></div><div></div></div><div><div></div><div></div></div><div><div></div><div></div></div><div><div></div><div></div></div><div><div></div><div></div></div><div><div></div><div></div></div><div><div></div><div></div></div><div><div></div><div></div></div><div><div></div><div></div></div><div><div></div><div></div></div><div><div></div><div></div></div><div><div></div><div></div></div><div><div></div><div></div></div><div><div></div><div></div></div><div><div></div><div></div></div><div><div></div><div></div></div><div><div></div><div></div></div><div><div></div><div></div></div><div><div></div><div></div></div><div><div></div><div></div></div><div><div></div><div></div></div><div><div></div><div></div></div><div><div></div><div></div></div><div><div></div><div></div></div><div><div></div><div></div></div><div><div></div><div></div></div><div><div></div><div></div></div><div><div></div><div></div></div><div><div></div><div></div></div><div><div></div><div></div></div><div><div></div><div></div></div><div><div></div><div></div></div><div><div></div><div></div></div><div><div></div><div></div></div><div><div></div><div></div></div><div><div></div><div></div></div><div><div></div><div></div></div><div><div></div><div></div></div><div><div></div><div></div></div><div><div></div><div></div></div><div><div></div><div></div></div><div><div></div><div></div></div><div><div></div><div></div></div><div><div></div><div></div></div><div><div></div><div></div></div><div><div></div><div></div></div><div><div></div><div></div></div><div><div></div><div></div></div><div><div></div><div></div></div><div><div></div><div></div></div><div><div></div><div></div></div><div><div></div><div></div></div><div><div></div><div></div></div><div><div></div><div></div></div><div><div></div><div></div></div><div><div></div><div></div></div><div><div></div><div></div></div><div><div></div><div></div></div><div><div></div><div></div></div><div><div></div><div></div></div><div><div></div><div></div></div><div><div></div><div></div></div><div><div></div><div></div></div><div><div></div><div></div></div><div><div></div><div></div></div><div><div></div><div></div></div><div><div></div><div></div></div><div><div></div><div></div></div><div><div></div><div></div></div><div><div></div><div></div></div><div><div></div><div></div></div><div><div></div><div></div></div><div><div></div><div></div></div><div><div></div><div></div></div><div><div></div><div></div></div><div><div></div><div></div></div><div><div></div><div></div></div><div><div></div><div></div></div><div><div></div><div></div></div><div><div></div><div></div></div><div><div></div><div></div></div><div><div></div><div></div></div><div><div></div><div></div></div><div><div></div><div></div></div><div><div></div><div></div></div><div><div></div><div></div></div><div><div></div><div></div></div><div><div></div><div></div></div><div><div></div><div></div></div><div><div></div><div></div></div><div><div></div><div></div></div><div><div></div><div></div></div><div><div></div><div></div></div><div><div></div><div></div></div><div><div></div><div></div></div><div><div></div><div></div></div><div><div></div><div></div></div><div><div></div><div></div></div><div><div></div><div></div></div><div><div></div><div></div></div><div><div></div><div></div></div><div><div></div><div></div></div><div><div></div><div></div></div><div><div></div><div></div></div><div><div></div><div></div></div><div><div></div><div></div></div><div><div></div><div></div></div><div><div></div><div></div></div><div><div></div><div></div></div><div><div></div><div></div></div><div><div></div><div></div></div><div><div></div><div></div></div><div><div></div><div></div></div><div><div></div><div></div></div><div><div></div><div></div></div><div><div></div><div></div></div><div><div></div><div></div></div><div><div></div><div></div></div><div><div></div><div></div></div><div><div></div><div></div></div><div><div></div><div></div></div><div><div></div><div></div></div><div><div></div><div></div></div><div><div></div><div></div></div><div><div></div><div></div></div><div><div></div><div></div></div><div><div></div><div></div></div><div><div></div><div></div></div><div><div></div><div></div></div><div><div></div><div></div></div><div><div></div><div></div></div><div><div></div><div></div></div><div><div></div><div></div></div><div><div></div><div></div></div><div><div></div><div></div></div><div><div></div><div></div></div><div><div></div><div></div></div><div><div></div><div></div></div><div><div></div><div></div></div><div><div></div><div></div></div><div><div></div><div></div></div><div><div></div><div></div></div><div><div></div><div></div></div><div><div></div><div></div></div><div><div></div><div></div></div><div><div></div><div></div></div><div><div></div><div></div></div><div><div></div><div></div></div><div><div></div><div></div></div><div><div></div><div></div></div><div><div></div><div></div></div><div><div></div><div></div></div><div><div></div><div></div></div><div><div></div><div></div></div><div><div></div><div></div></div><div><div></div><div></div></div><div><div></div><div></div></div><div><div></div><div></div></div><div><div></div><div></div></div><div><div></div><div></div></div><div><div></div><div></div></div><div><div></div><div></div></div><div><div></div><div></div></div><div><div></div><div></div></div><div><div></div><div></div></div><div><div></div><div></div></div><div><div></div><div></div></div><div><div></div><div></div></div><div><div></div><div></div></div><div><div></div><div></div></div><div><div></div><div></div></div><div><div></div><div></div></div><div><div></div><div></div></div><div><div></div><div></div></div><div><div></div><div></div></div><div><div></div><div></div></div><div><div></div><div></div></div><div><div></div><div></div></div><div><div></div><div></div></div><div><div></div><div></div></div><div><div></div><div></div></div><div><div></div><div></div></div><div><div></div><div></div></div><div><div></div><div></div></div><div><div></div><div></div></div><div><div></div><div></div></div><div><div></div><div></div></div><div><div></div><div></div></div><div><div></div><div></div></div><div><div></div><div></div></div><div><div></div><div></div></div><div><div></div><div></div></div><div><div></div><div></div></div><div><div></div><div></div></div><div><div></div><div></div></div><div><div></div><div></div></div><div><div></div><div></div></div><div><div></div><div></div></div><div><div></div><div></div></div><div><div></div><div></div></div><div><div></div><div></div></div><div><div></div><div></div></div><div><div></div><div></div></div><div><div></div><div></div></div><div><div></div><div></div></div><div><div></div><div></div></div><div><div></div><div></div></div><div><div></div><div></div></div><div><div></div><div></div></div><div><div></div><div></div></div><div><div></div><div></div></div><div><div></div><div></div></div><div><div></div><div></div></div><div><div></div><div></div></div><div><div></div><div></div></div><div><div></div><div></div></div><div><div></div><div></div></div><div><div></div><div></div></div><div><div></div><div></div></div><div><div></div><div></div></div><div><div></div><div></div></div><div><div></div><div></div></div><div><div></div><div></div></div><div><div></div><div></div></div><div><div></div><div></div></div><div><div></div><div></div></div><div><div></div><div></div></div><div><div></div><div></div></div><div><div></div><div></div></div><div><div></div><div></div></div><div><div></div><div></div></div><div><div></div><div></div></div><div><div></div><div></div></div><div><div></div><div></div></div><div><div></div><div></div></div><div><div></div><div></div></div><div><div></div><div></div></div><div><div></div><div></div></div><div><div></div><div></div></div><div><div></div><div></div></div><div><div></div><div></div></div><div><div></div><div></div></div><div><div></div><div></div></div><div><div></div><div></div></div><div><div></div><div></div></div><div><div></div><div></div></div><div><div></div><div></div></div><div><div></div><div></div></div><div><div></div><div></div></div><div><div></div><div></div></div><div><div></div><div></div></div><div><div></div><div></div></div><div><div></div><div></div></div><div><</div></div></div></div></div>	
---------------	--	--	--



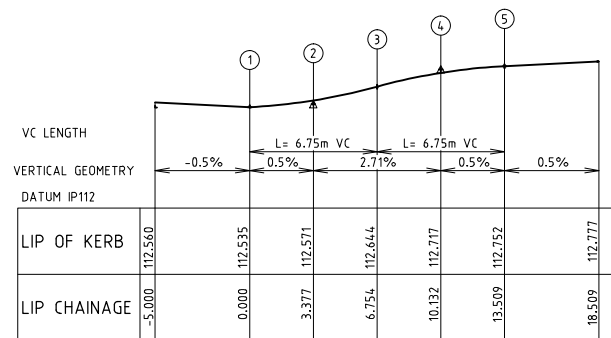
AMENDMENTS					breese pitt dixon pty. ltd. land surveyors civil engineers			1/19 cato street hawthorn east, 3123 telephone 8823 2300 fax no. 8823 2310		
				MELWAY REF. 342 J5	ORCHARD GREEN ESTATE STAGE 4B			MUNICIPALITY MELTON		
			SURVEY BPD	REFERENCE 7776 - E/4B						
			DESIGN JGB							
A 21.04.20	ISSUED FOR CONSTRUCTION			DRAWN IMW	PASSIVE STREET IRRIGATION DETAILS					
VER	DATE	REMARKS		CHECKED -	SCALE AS SHOWN	DATUM AHD	DATE FEB '20	SHEET 3 OF 12	A	



PLAN
SCALE 1:200

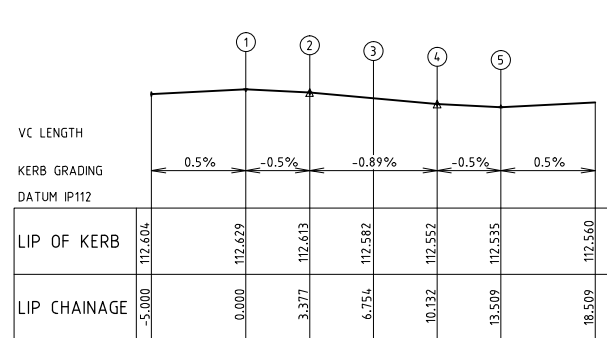


PLAN
SCALE 1:200



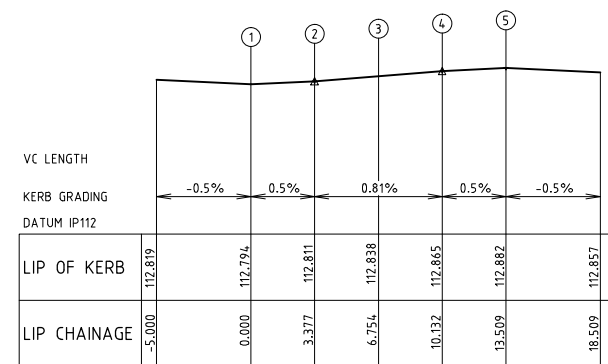
LIP LINE C

KERB SETOUT POINTS - LIP C			
POINT	EASTING	NORTHING	LIP LEVEL
1	1653.7160	1958.2580	112.535
2	1650.3690	1958.0060	112.571
3	1647.3740	1956.4930	112.644
4	1645.1860	1953.9490	112.717
5	1644.1380	1950.7610	112.752



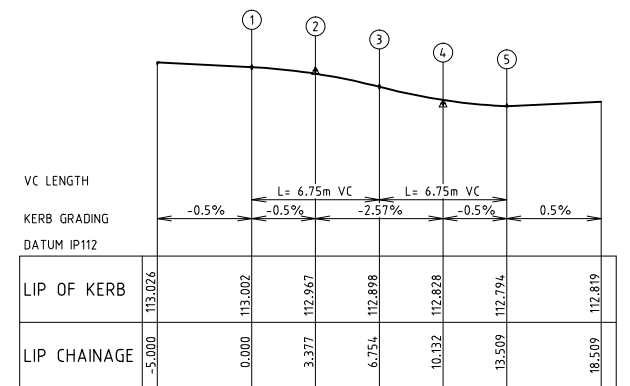
LIP LINE D

KERB SETOUT POINTS - LIP D			
POINT	EASTING	NORTHING	LIP LEVEL
1	1646.9940	1974.1880	112.629
2	1647.2450	1970.8420	112.613
3	1648.7580	1967.8470	112.582
4	1651.3020	1965.6590	112.552
5	1654.4900	1964.6110	112.535



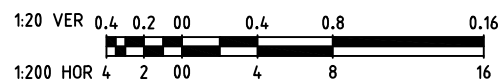
LIP LINE E

KERB SETOUT POINTS - LIP E			
POINT	EASTING	NORTHING	LIP LEVEL
1	1662.9120	2033.7000	112.794
2	1659.5650	2033.4480	112.811
3	1656.5700	2031.9350	112.838
4	1654.3820	2029.3910	112.865
5	1653.3340	2026.2030	112.882



LIP LINE F

KERB SETOUT POINTS - LIP F			
POINT	EASTING	NORTHING	LIP LEVEL
1	1656.1900	2049.6300	113.002
2	1656.4410	2046.2840	112.967
3	1657.9540	2043.2890	112.898
4	1660.4980	2041.1010	112.828
5	1663.6860	2040.0530	112.794

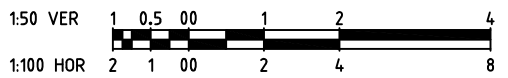
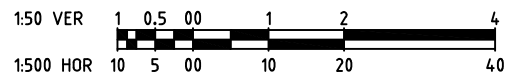
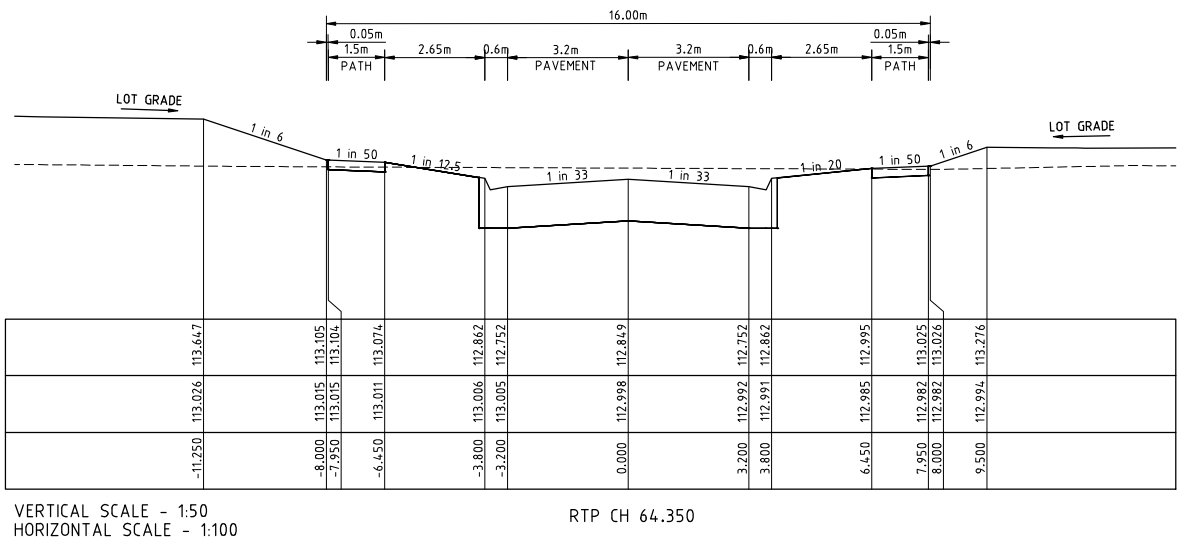
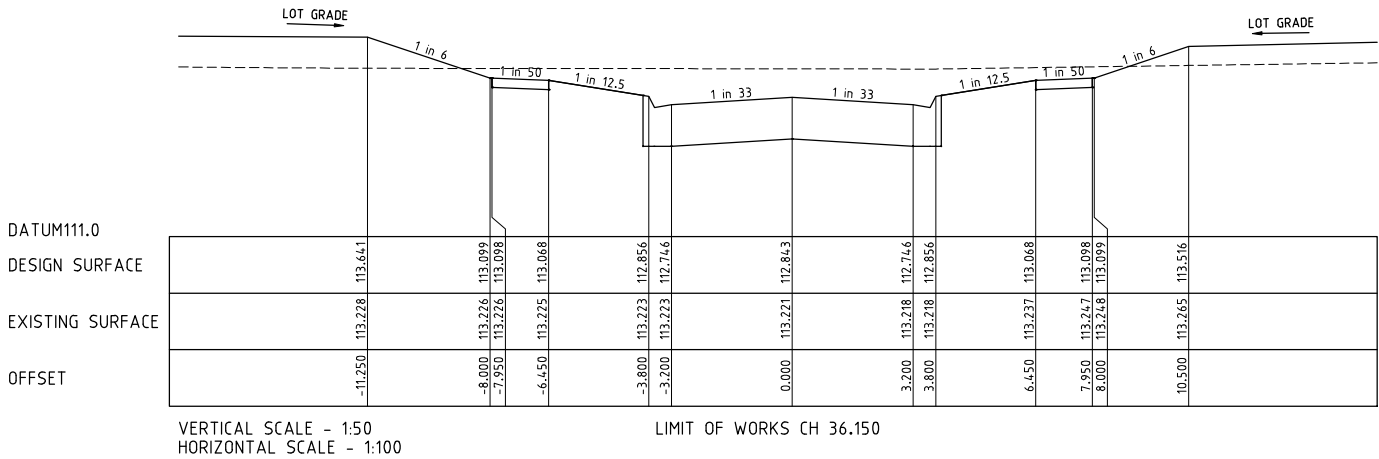
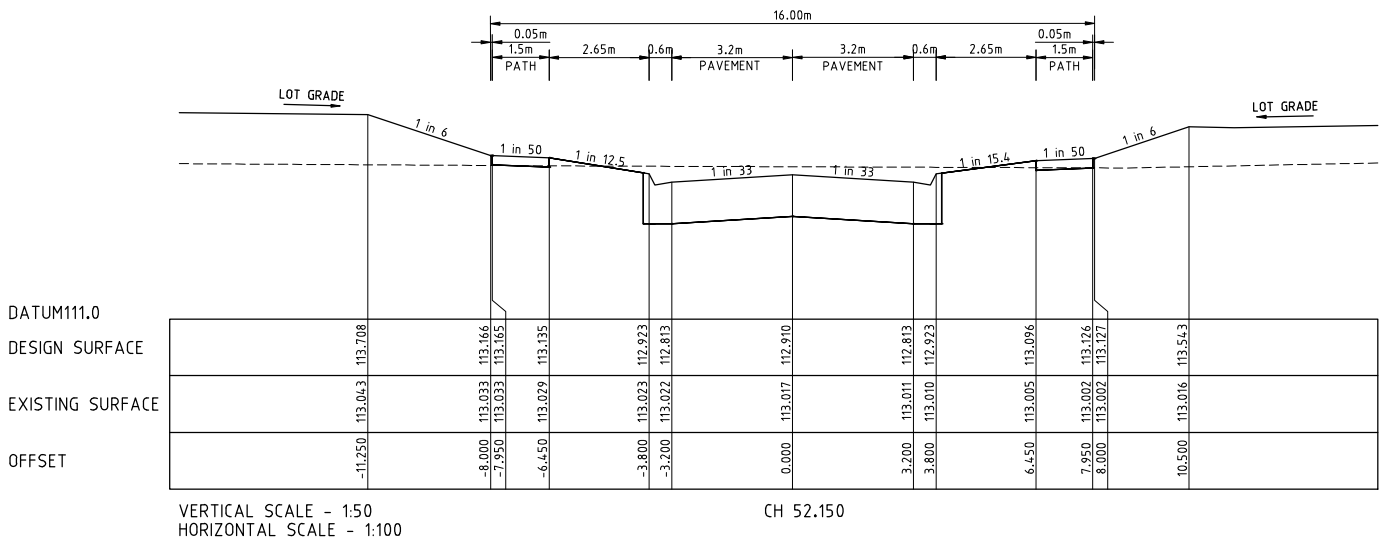
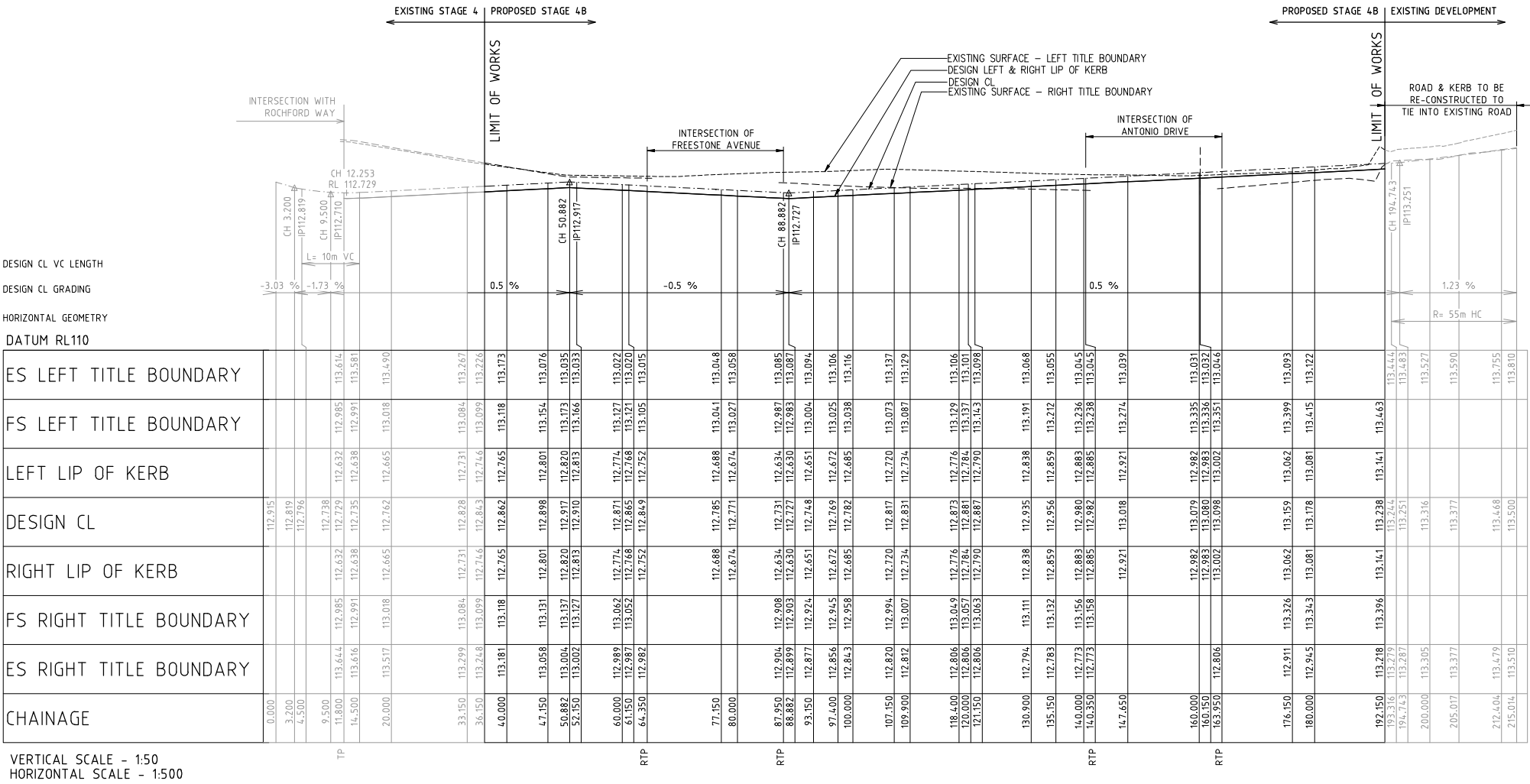



ALL SETOUT DETAILS
ARE PROVIDED
AT LIP OF KERB

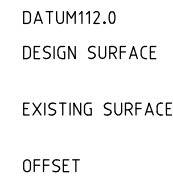
WARNING
BEWARE OF UNDERGROUND SERVICES
THE LOCATIONS OF UNDERGROUND SERVICES ARE
APPROXIMATE ONLY AND THEIR EXACT POSITION
SHOULD BE PROVEN ON SITE. NO GUARANTEE IS
GIVEN THAT ALL EXISTING SERVICES ARE SHOWN.

AMENDMENTS				breese pitt dixon pty. ltd.		1/19 cato street hawthorn east, 3123 telephone 8823 2300 fax no. 8823 2310		
				land surveyors		civil engineers		
				MELWAY REF. 342 J5		MUNICIPALITY		
				SURVEY BPD		MELTON		
				DESIGN JGB		REFERENCE		
				DRAWN IMW		7776 - E/4B		
	A	21.04.20	ISSUED FOR CONSTRUCTION		SCALE AS SHOWN		DATE FEB '20	
VER	DATE	REMARKS		CHECKED	-	DATUM AHD	SHEET 4 OF 12	A

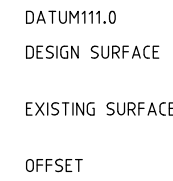
ORCHARD GREEN ESTATE
STAGE 4B
INTERSECTION DETAILS



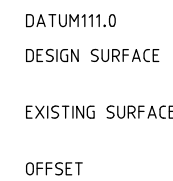
AMENDMENTS				breese pitt dixon pty. ltd.		1/19 cato street hawthorn east, 3123 telephone 8823 2300 fax no. 8823 2310			
				land surveyors		civil engineers			
				ORCHARD GREEN ESTATE STAGE 4B COOK ROAD - SHEET 1		MUNICIPALITY MELTON			
				7776 - E/4B		REFERENCE			
A	21.04.20	ISSUED FOR CONSTRUCTION	MELWAY REF. 342 H5	SCALE AS SHOWN		DATUM AHD	DATE FEB '20	SHEET 5 OF 12	A
VER	DATE	REMARKS	CHECKED -	DATE FEB '20		SHEET 5 OF 12		A	



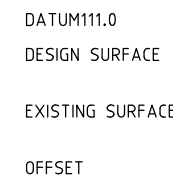
RTP CH 140.350



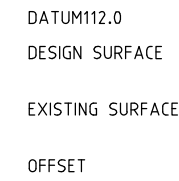
CH 121.150



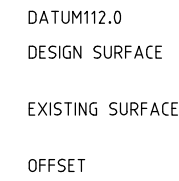
CH 107.150



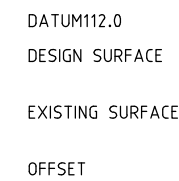
RTP CH 87.950



LIMIT OF WORKS CH 192.150

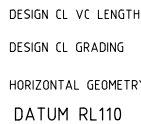


CH 176.150

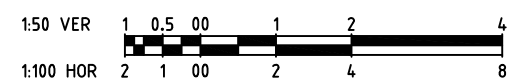
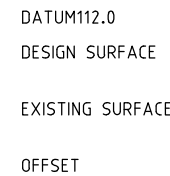
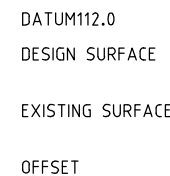
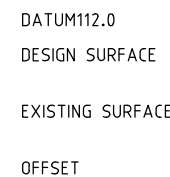
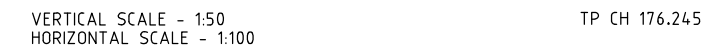
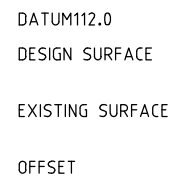
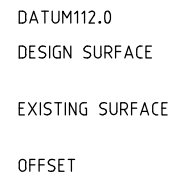



RTP CH 163.950

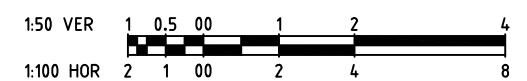
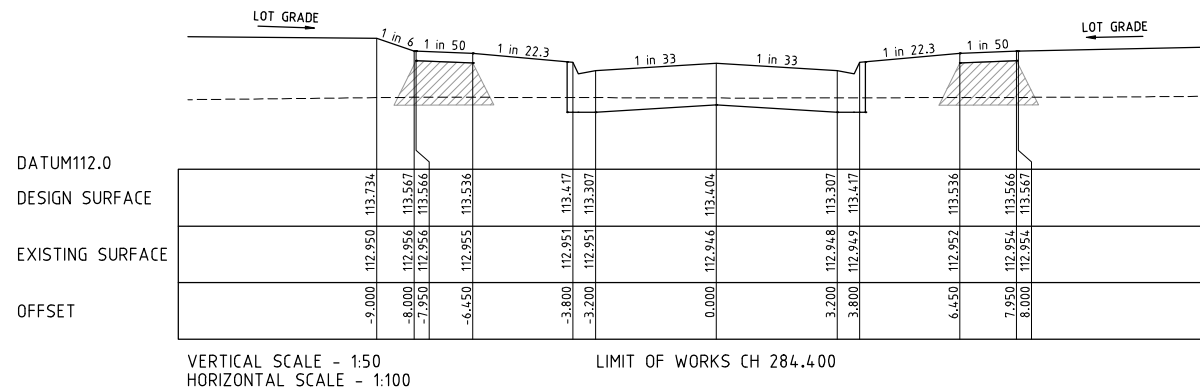
[illegible]




VERTICAL SCALE - 1:50
HORIZONTAL SCALE - 1:500

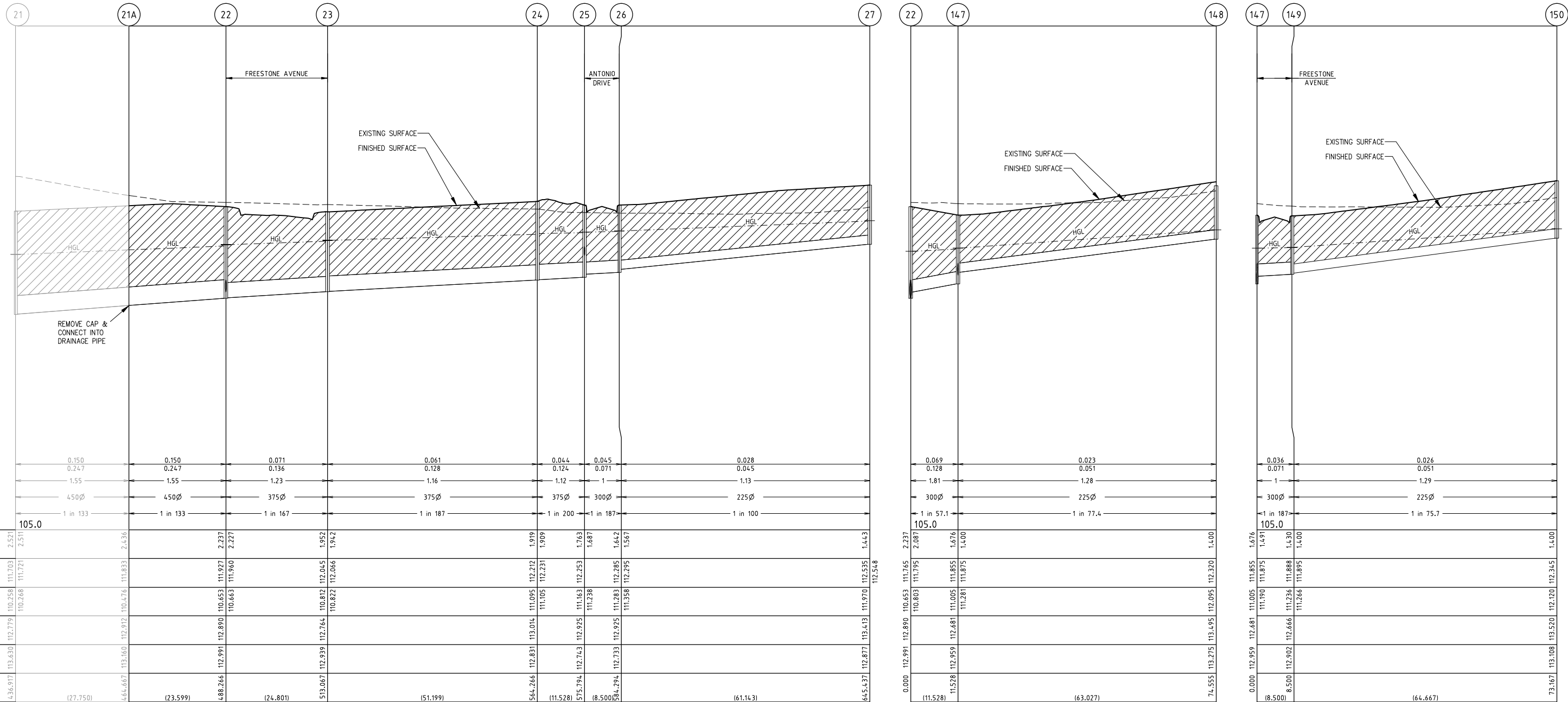


AMENDMENTS					breese pitt dixon pty. ltd. land surveyors civil engineers			1/19 cato street hawthorn east, 3123 telephone 8823 2300 fax no. 8823 2310		
				MELWAY REF. 342 H5	ORCHARD GREEN ESTATE STAGE 4B FREESTONE AVENUE			MUNICIPALITY MELTON		
			SURVEY BPD	REFERENCE 7776 - E/4B						
			DESIGN JGB							
A	21.04.20	ISSUED FOR CONSTRUCTION	DRAWN IMW							
VER	DATE	REMARKS	CHECKED -	SCALE AS SHOWN	DATUM AHD	DATE FEB '20	SHEET 7	OF 12	A	



AMENDMENTS					breese pitt dixon pty. ltd. land surveyors civil engineers			1/19 cato street hawthorn east, 3123 telephone 8823 2300 fax no. 8823 2310		
				MELWAY REF. 342 H5	ORCHARD GREEN ESTATE STAGE 4B ANTONIO DRIVE			MUNICIPALITY MELTON		
			SURVEY BPD	REFERENCE 7776 - E/4B						
			DESIGN JGB							
			DRAWN IMW							
	A 21.04.20	ISSUED FOR CONSTRUCTION								
VER	DATE	REMARKS		CHECKED -	SCALE AS SHOWN	DATUM AHD	DATE FEB '20	SHEET 8 OF 12	A	

EXISTING STAGE 4 | PROPOSED STAGE 4B



DESIGN FLOW (m³/s)
CAPACITY (m³/s)
AT FLOW VELOCITY (m/s)
PIPE SIZE (mm)
PIPE GRADE
DATUM

0.150	0.150	0.071	0.061	0.044	0.045	0.028
0.247	0.247	0.136	0.128	0.124	0.071	0.045
1.55	1.55	1.23	1.16	1.12	1	1.13
450Ø	450Ø	375Ø	375Ø	375Ø	300Ø	225Ø
1 in 133	1 in 133	1 in 167	1 in 187	1 in 200	1 in 187	1 in 100
105.0						
DEPTH TO INVERT	2.521	2.511	2.436			
H.G.L.	110.258	111.703	110.476	111.833		
INVERT LEVEL	112.779	112.779	112.890	112.960	112.764	112.939
FINISHED SURFACE	113.630	113.630	112.991	112.991	112.764	112.939
EXISTING SURFACE	113.630	113.630	112.991	112.991	112.764	112.939
PIPE CHAINAGE (Reach Length)	436.917	444.667	488.266	513.067	564.266	645.437

0.069	0.023
0.128	0.051
1.81	1.28
300Ø	225Ø
1 in 57.1	1 in 77.4
105.0	
DEPTH TO INVERT	2.237
H.G.L.	110.653
INVERT LEVEL	112.890
FINISHED SURFACE	112.991
EXISTING SURFACE	112.991
PIPE CHAINAGE (Reach Length)	74.555

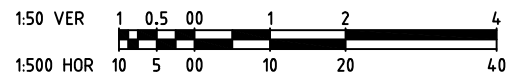
0.036	0.026
0.071	0.051
1	1.29
300Ø	225Ø
1 in 187	1 in 75.7
105.0	
DEPTH TO INVERT	1.676
H.G.L.	111.855
INVERT LEVEL	112.890
FINISHED SURFACE	112.991
EXISTING SURFACE	112.991
PIPE CHAINAGE (Reach Length)	73.167

LEGEND:

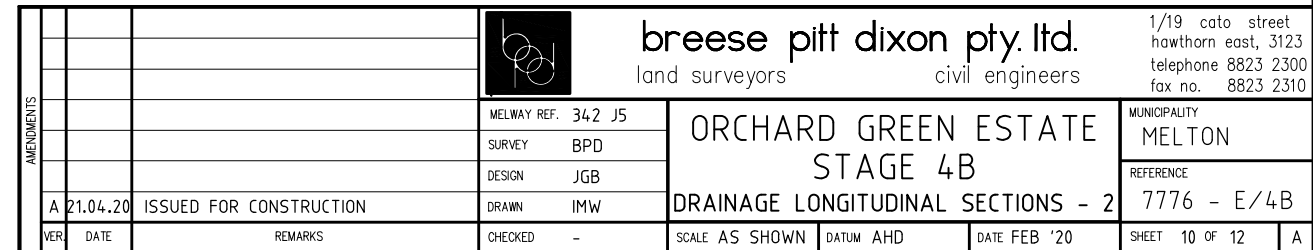
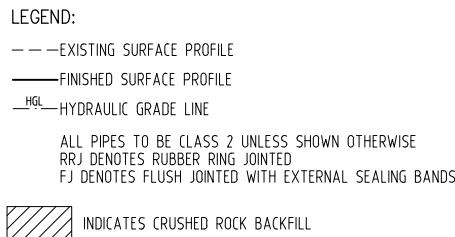
--- EXISTING SURFACE PROFILE
--- FINISHED SURFACE PROFILE
--- HGL --- HYDRAULIC GRADE LINE

ALL PIPES TO BE CLASS 2 UNLESS SHOWN OTHERWISE
RRJ DENOTES RUBBER RING JOINTED
FJ DENOTES FLUSH JOINTED WITH EXTERNAL SEALING BANDS

INDICATES CRUSHED ROCK BACKFILL

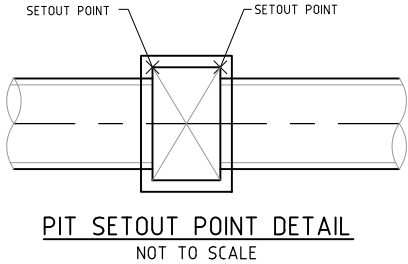


AMENDMENTS				breese pitt dixon pty. ltd.		1/19 cato street hawthorn east, 3123 telephone 8823 2300 fax no. 8823 2310			
				land surveyors		civil engineers			
				MELWAY REF. 342 J5		MUNICIPALITY MELTON			
				SURVEY BPD		REFERENCE 7776 - E/4B			
				DESIGN JGB		ORCHARD GREEN ESTATE STAGE 4B			
				DRAWN IMW		DRAINAGE LONGITUDINAL SECTIONS - 1			
VER	DATE	REMARKS	CHECKED	-	SCALE AS SHOWN	DATUM AHD	DATE FEB '20	SHEET 09 OF 12	A



PIT SCHEDULE

PIT No.	PIT DESCRIPTION	WIDTH	LENGTH	INLET		OUTLET		TOP	DEPTH	REMARKS
				DIA	INVERT	DIA	INVERT	PII RL	INVERT	
20A	EXISTING END CAP					300	110.784	112.912	2.128	Connect to Existing Drainage Pipe
21A	EXISTING END CAP					450	110.476	112.912	2.436	Connect to Existing Drainage Pipe
22	SIDE ENTRY PIT - GRATED	600	900	375	110.663	450	110.653	112.89	2.237	Refer Standard Drawing - EDCM 601
23	SIDE ENTRY PIT - GRATED	600	900	375	110.822	375	110.812	112.764	1.952	Refer Standard Drawing - EDCM 601
24	SIDE ENTRY PIT - GRATED	600	900	375	111.105	375	111.095	113.014	1.919	Refer Standard Drawing - EDCM 601
25	SIDE ENTRY PIT - GRATED	600	900	300	111.238	375	111.163	112.925	1.763	Refer Standard Drawing - EDCM 601
				225	111.475					
26	SIDE ENTRY PIT - GRATED	600	900			300	111.328	112.925	1.597	Refer Standard Drawing - EDCM 601
27	JUNCTION PIT	600	900			225	111.97	113.413	1.443	Refer Standard Drawing - EDCM 605
140	SIDE ENTRY PIT - GRATED	600	900	300	111.255	300	111.245	112.777	1.532	Refer Standard Drawing - EDCM 601
141	SIDE ENTRY PIT - GRATED	600	900	300	111.681	300	111.671	113.15	1.479	Refer Standard Drawing - EDCM 601
142	SIDE ENTRY PIT - GRATED	600	900			300	111.766	113.137	1.371	Refer Standard Drawing - EDCM 601
147	DOUBLE SIDE ENTRY PIT - GRATED	600	900	225	111.281	300	111.005	112.681	1.676	Refer Standard Drawing - EDCM 602
				300	111.19					
148	JUNCTION PIT	600	900			225	112.095	113.495	1.4	Refer Standard Drawing - EDCM 605
149	DOUBLE SIDE ENTRY PIT - GRATED	600	900	225	111.266	300	111.236	112.666	1.43	Refer Standard Drawing - EDCM 602
150	JUNCTION PIT	600	900			225	111.12	113.52	1.4	Refer Standard Drawing - EDCM 605
151	JUNCTION PIT	600	900			225	111.933	113.383	1.45	Refer Standard Drawing - EDCM 605
300	JUNCTION PIT	600	900	225	112.29				0.969	Convert Existing Cover to Heavy Duty Class D Trafficable Cover E 1654.0793 N 2079.7611
301	JUNCTION PIT	600	900			225	112.309	113.282	0.973	Refer Standard Drawing - EDCM 605 E 1652.4372 N 2077.9245 - E 1652.3278 N 2077.0478
305	SIDE ENTRY PIT - GRATED	600	900	225	112.290			113.316	1.026	Adjust Cover to Suit New Levels. Refer Standard Drawing - EDCM 601
306	JUNCTION PIT	600	900	225	112.315	225	112.305	113.269	0.963	Refer Standard Drawing - EDCM 605 E 1660.2812 N 2076.9853 - E 1660.1710 N 2076.0920
307	GRATED - JUNCTION PIT	600	900	225	112.445	225	112.435	113.290	0.855	Refer Standard Drawing - EDCM 605 E 1678.7681 N 2074.5810 - E 1679.6612 N 2074.4695
										Replace Cover with Heavy Duty Type D - Gatic Lid
308	GRATED - JUNCTION PIT	600	900			225	112.728	113.498	0.770	Refer Standard Drawing - EDCM 605 E 1722.9410 N 2069.1971 - E 1723.8341 N 2069.0859
										Replace Cover with Heavy Duty Type D - Gatic Lid



LEGEND:

— — — EXISTING SURFACE PROFILE


— — — FINISHED SURFACE PROFILE

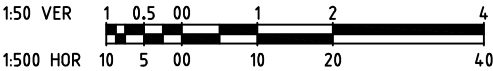
—HGL— HYDRAULIC GRADE LINE


ALL PIPES TO BE CLASS 2 UNLESS SHOWN OTHERWISE

RRJ DENOTES RUBBER RING JOINTED

FJ DENOTES FLUSH JOINTED WITH EXTERNAL SEALING BANDS

 INDICATES CRUSHED ROCK BACKFILL



AMENDMENTS				breese pitt dixon pty. ltd. land surveyors civil engineers	1/19 cato street hawthorn east, 3123 telephone 8823 2300 fax no. 8823 2310				
			MELWAY REF. 342 J5	ORCHARD GREEN ESTATE STAGE 4B DRAINAGE PIT SCHEDULE	MUNICIPALITY MELTON				
			SURVEY BPD						
			DESIGN JGB						
			DRAWN IMW						
	A	21.04.20	ISSUED FOR CONSTRUCTION	CHECKED -	SCALE AS SHOWN	DATUM AHD	DATE FEB '20	SHEET 11 OF 12	A



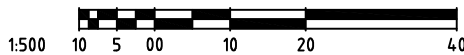
PLAN
SCALE 1:500

SIGNAGE LEGEND

A STREET SIGNS
(Q5-1)

NOTES

- ALL SIGNS TO BE SLEEVED USING A SL27 SLEEVE.
- INDICATES UNIDIRECTIONAL & BIDIRECTIONAL
RRPM'S PLACED AT 6.00m CTS
- HAZARD / DIRECTIONAL TGS'S SHOWN THUS AND
FOOTPATH RAMPS SHALL BE CONSTRUCTED IN ACCORDANCE WITH
VICROADS STD DWGS S02031 TO S02035. TGS'S SHALL CONFORM
TO AS1428.4
- STREET SIGNS TO HAVE MINIMUM 2 WEDGES IN THE SLEEVES
- SWLM - INDICATES SOLID WHITE "LONGLIFE" LINE MARKING
BWLM - INDICATES BROKEN WHITE "LONGLIFE" LINE MARKING



SYMBOL LEGEND

Drains
Sewer <300
Sewer >300
Water
House Drain
Property Inlet
Street Sign
PSM
Retaining Wall
Conduits 50mm
Conduits 100mm
Ex Gas/Elect/Tel

Prop Edit
S S
S S
W W
H H
P
G W
W100 W100
G E T

Temporary Bench Mark (TBM)
Ex/Natural/FS Level 28.57
FS @ Building Line RL28.57
Top/Toe of Batter TOP28.57 / TOE28.57
Top Ret. Wall Level TW28.57
Fill Prop/Ex (0.2m-0.5m depth)
Fill Prop/Ex (> 0.5m depth)
Cut Prop/Ex (> 0.2m depth)
Threshold Treatment

VER	DATE	REMARKS
A	21.04.20	ISSUED FOR CONSTRUCTION



breese pitt dixon pty. ltd.
land surveyors civil engineers

MELWAY REF.	342 J5
SURVEY	BPD
DESIGN	JGB
DRAWN	IMW
CHECKED	-

ORCHARD GREEN ESTATE
STAGE 4B
SIGNAGE AND LINEMARKING PLAN

1/19 cato street
hawthorn east, 3123
telephone 8823 2300
fax no. 8823 2310

MUNICIPALITY	MELTON
REFERENCE	7776 - E/4B
SHEET	12 OF 12
A	